

Damage Assessment Annex

Coordinating Agency

Rockbridge County, City of Buena Vista, and City of Lexington Emergency Management

Cooperating Agencies

Assessor's Office
Department of Public Works
Department of Parks and Recreation
Department of Finance
Police Department
Sheriff's Office
Department of Social Services
Public Schools
American Red Cross
Amateur Radio Emergency Services
Virginia Department of Transportation (VDOT)

Introduction

Purpose:

The Damage Assessment Support Annex describes the coordinating processes used to ensure the timely and accurate assessment and reporting of damages in Rockbridge County, City of Buena Vista, and City of Lexington after an emergency or disaster. It provides procedures to estimate the nature and extent of the damage and outlines details of the damage assessment process as required by the Commonwealth for determination of the need to request a Presidential Disaster Declaration as outlined in the Stafford Act.

Scope:

Damage assessment activities are an evaluation (in dollars) of the estimated cost for damages or loss to agriculture, infrastructure, real property (City/County, state and private) and equipment. This annex covers a broad scope of responsibilities, assignments and standard forms to be used in the overall process; it is applicable to departments and agencies that are assisting with the post-event damage assessment as coordinated by Rockbridge County Emergency Management. This document will address general situations with no consideration given for special incident scenarios.

Definitions:

Initial Damage Assessment (IDA): Independent review and documentation of the impact and magnitude of a disaster on individuals, families, businesses, and public property. This report is due into the Virginia Emergency Operations Center in the required format (see Tab 1) within 72 hours of disaster impact. The Governor will use this information to determine if a Preliminary Damage Assessment needs to be requested from FEMA in response to outstanding needs.

Preliminary Damage Assessment (PDA): A joint venture between FEMA, State and local government to document the impact and magnitude of the disaster on individuals, families, businesses, and public property. The Governor will use the information gathered during the PDA process to determine whether Federal assistance should be requested.

Situation:

Following any significant disaster/emergency, a multitude of independent damage assessment activities will be conducted by a variety of organizations including American Red Cross, insurance companies, utility companies, and others. Outside of these assessments, a series of local, state and federal damage assessment activities will be conducted.

During the recovery phase of a disaster, Rockbridge County, City of Buena Vista, and the City of Lexington will conduct a systematic analysis of the nature of the damage to public and private property, which estimates the extent of damage based upon actual observation and inspection. Damage assessment will be performed on an urgent basis to provide an initial estimate of damage. A damage estimate of public and private property is required for Rockbridge County, City of Buena Vista, and the City of Lexington to determine actions needed, the establishment of properties, and the allocation of local government resources, and what, if any, outside assistance will be required.

Based upon the local damage assessment reports, the Governor may request a Presidential declaration of a "major disaster", "major emergency", or a specific federal agency disaster declaration (Small Business Administration, Department of Agriculture, Corps of Engineers, etc.) to augment state/local/private disaster relief efforts. The President, under a "major emergency" declaration may authorize the utilization of any federal equipment, personnel and other resources. The President under a "major disaster" declaration may authorize two basic types of disaster relief assistance:

1. Individual Assistance (IA)
 - a. Temporary housing;
 - b. Individual and family grants (IFG);
 - c. Disaster unemployment assistance;
 - d. Disaster loans to individuals, businesses and farmers;
 - e. Agricultural assistance;
 - f. Legal services to low-income families and individuals;
 - g. Consumer counseling and assistance in obtaining insurance benefits;
 - h. Social security assistance;
 - i. Veteran's assistance; and
 - j. Casualty loss tax assistance.
2. Public Assistance (PA)
 - a. Debris removal;
 - b. Emergency protective measures; and
 - c. Permanent work to repair, restore or replace road systems, water control facilities, public buildings and equipment, public utilities public recreational facilities, etc.

Assumptions:

1. Fast and accurate damage assessment is vital to effective disaster responses;
2. Damage will be assessed by pre-arranged teams of local resource personnel;
3. If promptly implemented, this plan can expedite relief and assistance for those adversely affected;
4. A catastrophic emergency will require the expenditure of large sums of local funds. Financial operations will be carried out under compressed schedules and intense political pressures, which will require expeditious responses that meet sound financial management and accountability requirements;
5. Damage to utility system and to the communications systems will hamper the recovery process;
6. A major disaster affecting the county could result in the severance of a main transportation artery resulting in a significant alteration of lifestyle in the community.

Policies:

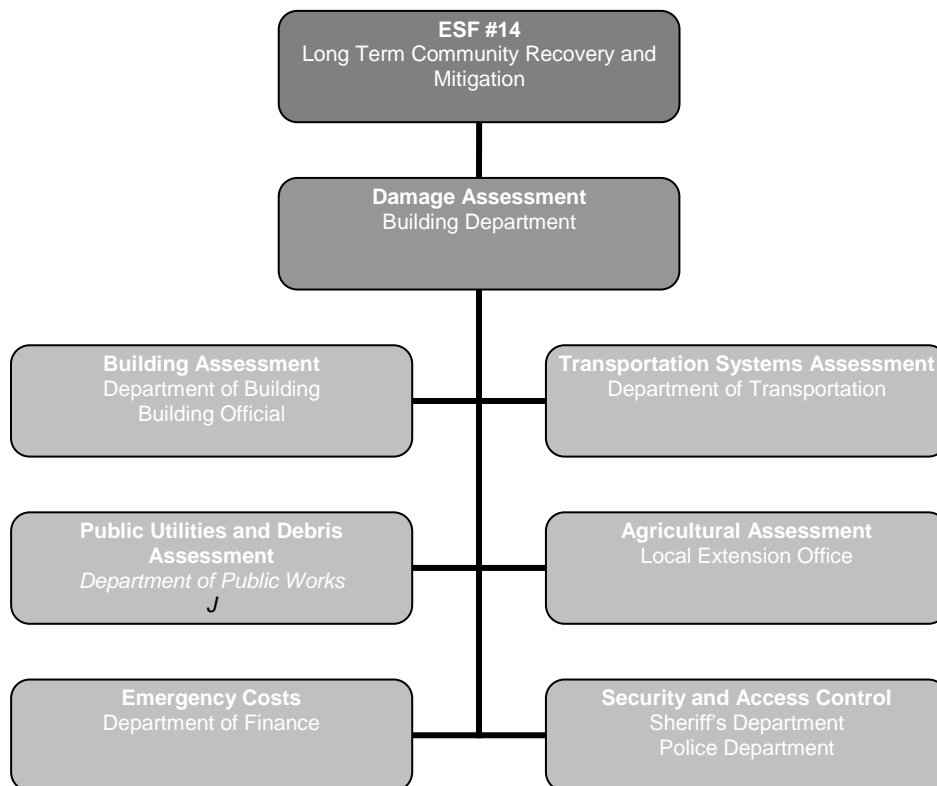
1. The Initial Damage Assessment (IDA) results will be reported to the Virginia EOC within 72 hours of the incident (WebEOC –primary; Fax or Call – secondary);
2. At the Incident Commander's request, the first priority for damage assessment may be to assess all of Rockbridge County, City of Buena Vista, and the City of Lexington's structural/infrastructure damage;

3. A Federal/State supported Preliminary Damage Assessment will be conducted in coordination with Rockbridge County, City of Buena Vista, and the City of Lexington to verify IDA results and determine long-term needs. This data will be used to determine the need for a Presidential Disaster Declaration;
4. An estimate of expenditures and obligated expenditures will be submitted to Rockbridge County, City of Buena Vista, and the City of Lexington and the VEOC before a Presidential Disaster declaration is requested;
5. Additional reports will be required when requested by the Emergency Management Director or Emergency Management Coordinator depending on the type and magnitude of the incident;
6. Supplies, equipment and transportation organic to each organization will be utilized by that organization in the accomplishment of its assigned responsibility or mission;
7. Additional supplies, equipment and transportation essential to the continued operation of each organization will be requested through ESF #7 (Resource Support) in the EOC;
8. The approval to expend funds for response and recovery operations will be given by the department head from each agency or department involved in recovery operations. Each agency or department should designate a responsible person to ensure that actions taken and costs incurred are consistent with identified missions.

Concept of Operations

Organization:

The ultimate responsibility of damage assessment lies with the local governing authority. The Rockbridge County, City of Buena Vista, and the City of Lexington’s Emergency Management Coordinator or his/her designee will be responsible for damage assessments, collection of the data and preparation of necessary reports through the functions of ESF 14, Long Term Community Recovery and Mitigation. Damage assessments will be conducted by qualified, trained local teams under the supervision of the Department of Building. The damage assessment teams will be supported by multiple agencies from Rockbridge County, City of Buena Vista, and the City of Lexington. If the nature of the incident is such that local resources are incapable of assessing the damage, state assistance will be requested through normal resource request procedures to the VEOC.



Additional ESFs may need to be utilized to enhance the results of the evacuation such as ESF 7 (Resource Management), ESF 5 (Emergency Management) and ESF 11 (Agriculture and Natural Services). If the incident involves chemicals or radiation that may cause contamination of damage area, ESF 8 (Health and Medical) and ESF 10 (Oil and Hazardous Materials) may also be needed. The primary ESFs as listed will utilize their full ESF specific annex and any supporting agencies and ESFs to implement their portion of the damage assessment.

Basic administrative and accountability procedures for any damage assessment activities will be followed as required by County, state and federal regulations. If supplies, materials, and equipment are required, records will be maintained in accordance to County/City, state and federal reporting requirements. All procurement processes will also follow appropriate County procurement policies and regulations, and state and federal policies and regulations as necessary.

Responsibilities:

1. Department of Building and Zoning
 - a. Assemble the appropriate team and develop damage assessment plans, policies and procedures;
 - b. Maintain a list of critical facilities that will require immediate repair if damaged;
 - c. Appoint a representative to be located within the EOC to direct damage assessment operations to include operation of the teams, collecting data, and developing accurate and appropriate reports for the Rockbridge County, City of Buena Vista, and the City of Lexington Emergency Management Coordinators;
 - d. Solicit cooperation from companies and local representatives of support agencies to serve as member of damage assessment teams;
 - e. Conduct damage assessment training programs for the teams;
 - f. Coordinate disaster teams conducting field surveys;
 - g. Collect and compile incoming damage reports from teams in the field, from other operations directors, and outside agencies, systems and companies;
 - h. Using existing policies and procedures, determine the state of damaged buildings and place notification/placards as needed;
 - i. Using existing policies and procedures, facilitate the issuance of building permits and for the review and inspection of the site-related and construction plans submitted for the rebuilding/restoration of buildings;
 - j. Assist in the establishment of the sequence of repairs and priorities for the restoration of affected areas;
 - k. Correlate and consolidate all expenditures for damage assessment to the Department of Finance;
 - l. Ensure that there will be an escort available for any State or Federal damage assessments and prepare an area map with the damage sites prior to their arrival.
2. Department of Public Works
 - a. Designate representatives to serve as members of damage assessment teams;
 - b. Participate in damage assessment training;
 - c. Collect and compile damage data regarding public and private utilities, and provide to City/County Department of Building and Zoning within the EOC;
 - d. Participate as requested in Initial Damage Assessment field reviews and escorting for State and Local damage assessments.
3. Virginia Department of Transportation
 - a. Designate representatives to serve as members of damage assessment teams;
 - b. Participate in damage assessment training;
 - c. Collect and compile damage data regarding public and private transportation resources, and provide to City/County Department of Building and Zoning within the EOC;
 - d. Participate as requested in Initial Damage Assessment field reviews and escorting for State and Local damage assessments.

4. Extension Office
 - a. Designate representatives to serve as members of damage assessment teams;
 - b. Participate in damage assessment training;
 - c. Collect and compile damage data regarding public and private agricultural resources, and provide to City/County Department of Building and Zoning within the EOC;
 - d. Participate as requested in Initial Damage Assessment field reviews and escorting for State and Local damage assessments.
5. Sheriff's Office and Police Departments
 - a. Provide security for ingress and egress of the damaged area(s) post-event;
 - b. Provide access and security for damage assessment activities with Rockbridge County, City of Buena Vista, and the City of Lexington.
6. Department of Finance
 - a. Collect, report and maintain estimates of expenditures and obligations required for response and recovery activities;
 - b. Maintain accurate records of funds, materials and man-hours expended as a direct result of the incident;
 - c. Report these estimates and obligations to the Emergency Management Coordinator for inclusion into the appropriate Public Assistance IDA categories.
7. Emergency Management
 - a. Overall direction and control of damage assessment for Rockbridge County, City of Buena Vista, and the City of Lexington;
 - b. Reporting of damages to the Virginia EOC within 72 of the incident in the appropriate Initial Damage Assessment format;
 - c. Ensuring appropriate and adequate public information and education regarding the damage assessment process; and
8. Public Information Officer
 - a. Ensures prior coordination with appropriate damage assessment coordination ESFs to provide periodic spot announcements to the public on pertinent aspects of the assessments.

Actions

Mitigation/Prevention:

- Develop public awareness programs from building codes, ordinances and the National Flood Insurance Program;
- Develop a damage assessment training program;
- Develop damage assessment plans, procedures and guidance;
- Designate representatives to lead damage assessment activities within the EOC;
- Designate damage assessment team members.

Preparedness:

- Identify resources to support and assist with damage assessment activities;
- Train personnel in damage assessment techniques;
- Review plans, procedures and guidance for damage assessments, damage reporting and accounting;
- List all critical facilities and all local buildings requiring priority restoration.

Response:

- Activate the damage assessment staff in the EOC;
- Organize and deploy damage assessment teams or team escorts as necessary;
- Organize collection of data and record keeping at the onset of the event;

- Document all emergency work performed by local resources to include appropriate photographs;
- Compile and disseminate all damage reports for appropriate agencies;
- Determine the state of damaged buildings and place notification/placards as needed;
- Inform officials of hazardous facilities, bridges, road, etc.

Recovery:

- Continue damage assessment surveys as needed;
- Advise on priority repairs and unsafe structures;
- Facilitate the issuance of building permits and for the review and inspection of the site-related and construction plans submitted for the rebuilding/restoration of buildings;
- Monitor restoration activities;
- Complete an event review with all responding parties;
- Review damage assessment plans, policies and procedures in respect to the recent emergency response. Update as necessary and disseminate;
- Review building codes and land use regulations for possible improvements;
- Review and update the necessary logistical support to carry out emergency tasking. Instruct all departments to replenish used on-hand inventory of supplies;
- Assist the Department of Finance in the preparation and submission of disaster assistance applications to the appropriate state and/or federal agencies for reimbursement of disaster related expenditures.

Tab 1 to Damage Assessment Annex Damage Assessment Team Assignments

The appointed representative from the Department of Building will report to the EOC when activated by the Emergency Management Coordinator. Damage assessment teams will be assembled and instructions provided relative to the emergency. Team leaders will be designated to compile information for situation and damage assessment reports.

TEAM ASSIGNMENTS (based on categories in Damage Assessment Form)

I. PRIVATE PROPERTY

Category A – Residential/Personal Property

Houses, manufactured homes, apartments, duplexes (identify number of families and units affected) – Include estimate for structures, private bridges, fencing and vehicles/boats.

Team: Building Official
Department Heads and additional staff, as needed

Category B – Business and Industry

Industrial plants and businesses (facilities, equipment, materials, commercial vehicles).

Team: Building Official
Department Heads and additional staff, as needed

Category C – Agriculture

An agricultural parcel is at least 5 acres. Include estimate of all damage to houses, manufactured homes, crops (type and acres), farm buildings, livestock (number and type), fencing (in miles) and equipment (pieces and type).

Team: VPI Extension Agent
Department Heads and additional staff, as needed

II. PUBLIC PROPERTY

Category A – Debris Clearance

Debris on roads and streets, on public property, on private property and structure demolition.

Team: Department Heads and additional staff, as needed

Category B – Protective Measures

1. Life and safety (all public safety report costs)

Team: Department Heads and additional staff, as needed

2. Barricading, sandbagging, stream drainage channels, health (rodents/insect control)

Team: Department Heads and additional staff, as needed
Virginia Department of Health

Category C – Road Systems

Damage to roads and streets, bridges, culverts, sidewalks, traffic control systems.

Team: VDOT

Department Heads and additional staff, as needed

Category D – Water Control Facilities

Damage to dams and drainage systems.

Team: Department Heads and additional staff, as needed

Category E – Public Buildings and Equipment

Damage to buildings, inventory, vehicles and equipment.

Team: Department Heads and additional staff, as needed

Category F – Public Utility Systems

Damage to water plants, dams, sanitary/sewage systems and storm drainage systems.

Team: Department Heads and additional staff, as needed

Virginia Department of Health – Environmental Health

Category G – Recreational Facilities

Damage to parks, shelters, lighting and equipment.

Team: Parks and Recreation

Department Heads and additional staff, as needed

**Tab 2 to Damage Assessment Annex
TELEPHONE REPORT**

LOCAL GOVERNMENT DAMAGE ASSESSMENT – TELEPHONE REPORT				
1. CALLER NAME			2. PROPERTY ADDRESS (include apt. no; zip code)	
3. TELEPHONE NUMBER			4. TYPE OF PROPERTY	5. OWNERSHIP
Home	Work	Cell	<input type="checkbox"/> Single Family <input type="checkbox"/> Multi-Family (usually Apts.) <input type="checkbox"/> Business <input type="checkbox"/> Check here if residence is a vacation home—not a primary residence	<input type="checkbox"/> Own <input type="checkbox"/> Rent <input type="checkbox"/> Lease (business only)
Best time to call	Best number to use			
6. CONSTRUCTION TYPE				
<input type="checkbox"/> Masonry <input type="checkbox"/> Wood Frame <input type="checkbox"/> Mobile Home <input type="checkbox"/> Manufactured <input type="checkbox"/> Other				
7. TYPE OF INSURANCE				
<input type="checkbox"/> Property <input type="checkbox"/> Sewer Back-up <input type="checkbox"/> Flood (Structure) <input type="checkbox"/> Flood (Contents) <input type="checkbox"/> Wind/Hurricane <input type="checkbox"/> None				
8. DAMAGES (Check all that apply)				
HVAC <input type="checkbox"/> Yes <input type="checkbox"/> No Water Heater <input type="checkbox"/> Yes <input type="checkbox"/> No Electricity <input type="checkbox"/> On <input type="checkbox"/> Off Natural Gas <input type="checkbox"/> On <input type="checkbox"/> Off Roof Intact <input type="checkbox"/> Yes <input type="checkbox"/> No Foundation <input type="checkbox"/> Yes <input type="checkbox"/> No Windows <input type="checkbox"/> Yes <input type="checkbox"/> No Sewer <input type="checkbox"/> OK <input type="checkbox"/> Not OK Major Appliances <input type="checkbox"/> Yes <input type="checkbox"/> No Basement Flooding <input type="checkbox"/> Yes - Depth ___ Feet Furnace <input type="checkbox"/> Yes <input type="checkbox"/> No				
9. SOURCE OF DAMAGES				
<input type="checkbox"/> Sewer back-up <input type="checkbox"/> Primarily Flood <input type="checkbox"/> Wind/Wind driven rain <input type="checkbox"/> Tornado Other <input type="checkbox"/> _____				
10. Based on the damages reported, the property is currently <input type="checkbox"/> Habitable <input type="checkbox"/> Uninhabitable				
11. CALLER'S ESTIMATE OF DAMAGES				
REPAIRS		CONTENTS		TOTAL
\$		\$		\$
12. COMMENTS				
12. CALL TAKER			13. DATE & TIME REPORT TAKEN	

Tab 3 to Damage Assessment Annex Cumulative Initial Damage Assessment Report

PRIMARY: Input into WebEOC

SECONDARY: VDEM VEOC Phone Number (804) 674-2400 Fax Number (804) 674-2419

Jurisdiction:									
Date/Time IDA Report Prepared:									
Prepared By:									
Call back number:									
Fax Number:									
Email Address:									
Part I: Private Property CUMULATIVE DAMAGES									
Type Property	# Destroyed	# Major Damage	# Minor Damage	# Affected	Dollar Loss	% Flood Insured	% Property Insured	% Owned	% Secondary
Single Dwelling Houses (inc. condo units)									
Multi-Family Residences (count each unit)									
Manufactured Residences (Mobile)									
Business/Industry									
Non-Profit Organization Buildings									
Agricultural Facilities									
Part II: Public Property (Includes eligible non-profit Facilities) CUMULATIVE DAMAGES									
Type of Property							Estimated Dollar Loss	% Insured	
Category A (Debris Removal)									
Category B (Emergency Protective Measures)									
Category C (Roads and Bridges)									
Category D (Water Control Facilities)									
Category E (Public Buildings and Equipment)									
Category F (Public Utilities)									
Category G (Parks and Recreation Facilities)									
TOTAL							\$0.00		
Additional Comments:									



Tab 4 to Damage Assessment Annex Public Assistance Damage Assessment Guidelines

Category	Purpose	Eligible Activities
A: Debris Removal	Clearance of trees and woody debris; building wreckage; sand, mud, silt, and gravel; vehicles; and other disaster-related material deposited on public and, in very limited cases, private property	<ul style="list-style-type: none"> Debris removal from a street or highway to allow the safe passage of emergency vehicles Debris removal from public property to eliminate health and safety hazards
B: Emergency Protective Measures	Measures taken before, during, and after a disaster to save lives, protect public health and safety, and protect improved public and private property	<ul style="list-style-type: none"> Emergency Operations Center activation Warning devices (barricades, signs, and announcements) Search and rescue Security forces (police and guards) Construction of temporary levees Provision of shelters or emergency care Sandbagging • Bracing/shoring damaged structures Provision of food, water, ice and other essential needs Emergency repairs • Emergency demolition Removal of health and safety hazards
C: Roads and Bridges	Repair of roads, bridges, and associated features, such as shoulders, ditches, culverts, lighting and signs	<ul style="list-style-type: none"> Eligible work includes: repair to surfaces, bases, shoulders, ditches, culverts, low water crossings, and other features, such as guardrails.
D: Water Control Facilities	Repair of irrigation systems, drainage channels, and pumping facilities. Repair of levees, dams, and flood control channels fall under Category D, but the eligibility of these facilities is restricted	<ul style="list-style-type: none"> Channel alignment • Recreation Navigation • Land reclamation Fish and wildlife habitat Interior drainage • Irrigation Erosion prevention • Flood control
E: Buildings and Equipment	Repair or replacement of buildings, including their contents and systems; heavy equipment; and vehicles	<ul style="list-style-type: none"> Buildings, including contents such as furnishings and interior systems such as electrical work. Replacement of pre-disaster quantities of consumable supplies and inventory. Replacement of library books and publications. Removal of mud, silt, or other accumulated debris is eligible, along with any cleaning and painting necessary to restore the building. All types of equipment, including vehicles, may be eligible for repair or replacement when damaged as a result of the declared event.
F: Utilities	Repair of water treatment and delivery systems; power generation facilities and distribution lines; and sewage collection and treatment facilities	<ul style="list-style-type: none"> Restoration of damaged utilities. Temporary as well as permanent repair costs can be reimbursed.
G: Parks, Recreational Facilities, and Other Items	Repair and restoration of parks, playgrounds, pools, cemeteries, and beaches. This category also is used for any work or facility that cannot be characterized adequately by Categories A-F	<ul style="list-style-type: none"> Roads, buildings, and utilities within those areas and other features, such as playground equipment, ball fields, swimming pools, tennis courts, boat docks and ramps, piers, and golf courses. Grass and sod are eligible only when necessary to stabilize slopes and minimize sediment runoff. Repairs to maintained public beaches may be eligible in limited circumstances.

Only states, local government agencies and authorities, public utilities, and certain non-profit organizations may be eligible for Public Assistance grants.

Eligibility Criteria: Virginia Population per latest US Census x annual multiplier for state eligibility; Locality population per latest US Census x annual local multiplier for local eligibility.

Adapted from the *Public Assistance Guide, FEMA 322* ; Additional policy information is available at <http://www.fema.gov/government/grant/pa/policy.shtm>

Tab 5 to Damage Assessment Annex Public Assistance Damage Assessment Field Form

JURISDICTION: _____ **INSPECTOR:** _____ **DATE:** _____ **PAGE** _____ **of** _____

Key for Damage Categories (Use appropriate letters in the 'category' blocks below)		
A. Debris Clearance	D. Water Control Facilities	G. Parks, Recreation Facilities & Other
B. Emergency Protective Measures	E. Public Buildings & Equipment	
C. Roads & Bridges	F. Public Utility System	

SITE #	WORK CATEGORY:	NAME of FACILITY and LOCATION:			
		GPS (in decimal deg.):			
DAMAGE DESCRIPTION:					
EMERGENCY FOLLOW-UP NEEDED?		Y	N	TOTAL ESTIMATED DAMAGES: \$	
FLOOD INSURANCE		Y	N	PROPERTY INSURANCE	Y N
					NO DATA AVAILABLE (check box)

SITE #	WORK CATEGORY:	NAME of FACILITY and LOCATION:			
		GPS (in decimal deg.):			
DAMAGE DESCRIPTION:					
EMERGENCY FOLLOW-UP NEEDED?		Y	N	TOTAL ESTIMATED DAMAGES: \$	
FLOOD INSURANCE		Y	N	PROPERTY INSURANCE	Y N
					NO DATA AVAILABLE (check box)

SITE #	WORK CATEGORY:	NAME of FACILITY and LOCATION:			
		GPS (in decimal deg.):			
DAMAGE DESCRIPTION:					
EMERGENCY FOLLOW-UP NEEDED?		Y	N	TOTAL ESTIMATED DAMAGES: \$	
FLOOD INSURANCE		Y	N	PROPERTY INSURANCE	Y N
					NO DATA AVAILABLE (check box)



Tab 6 to Damage Assessment Annex Individual Assistance Damage Assessment Level Guidelines

Damage Definitions	General Description	Things to Look For	Water Levels
DESTROYED	DESTROYED	DESTROYED	DESTROYED
Structure is a total loss. <u>Not economically feasible to rebuild.</u>	Structure leveled above the foundation, or second floor is gone. Foundation or basement is significantly damaged.	Structure leveled or has major shifting off its foundation or only the foundation remains. Roof is gone, with noticeable distortion to walls.	More than 4 feet in first floor. More than 2 feet in mobile home .
MAJOR	MAJOR	MAJOR	MAJOR
Structure is currently uninhabitable. Extensive repairs are necessary to make habitable. <u>Will take more than 30 days to repair.</u>	Walls collapsed. Exterior frame damaged. Roof off or collapsed. Major damage to utilities: furnace, water heater, well, septic system.	Portions of the roof and decking are missing. Twisted, bowed, cracked, or collapsed walls. Structure penetrated by large foreign object, such as a tree. Damaged foundation.	2 to 4 feet in first floor without basement. 1 foot or more in first floor with basement. 6 inches to 2 feet in mobile home with plywood floors. 1 inch in mobile home with particle board floors.
MINOR	MINOR	MINOR	MINOR
Structure is damaged and uninhabitable. Minor repairs are necessary to make habitable. <u>Will take less than 30 days to repair.</u>	Interior flooring / exterior walls with minor damage. Tree(s) fallen on structure. Smoke damage. Shingles / roof tiles moved or missing.	Many missing shingles, broken windows and doors. Loose or missing siding. Minor shifting or settling of foundation. Minor damage to septic system.	2 inches to 2 feet in first floor without basement. 1 foot or more in basement. <u>Crawlspace</u> – reached insulation. <u>Sewage</u> - in basement. Mobile home , "Belly Board" to 6 inches.
AFFECTED HABITABLE	AFFECTED HABITABLE	AFFECTED HABITABLE	AFFECTED HABITABLE
Structure has received minimal damage and is <u>habitable without repairs.</u>	Chimney or porch damaged. Carpet on first floor soaked. Broken windows.	Few missing shingles, some broken windows. Damage to air conditioning units / etc. Some minor basement flooding.	Less than 2 inches in first floor Minor basement flooding. Mobile home , no water in "Belly Board".

IDA Tips: Estimating Water Depths

Brick - 2 1/2 inches per course

Lap or aluminum siding - 4 inches or 8 inches per course

Stair risers - 7 inches

Concrete or cinder block - 8 inches per course

Door knobs - 36 inches above floor

Standard doors - 6 feet 8 inches

Tab 7 to Damage Assessment Annex

LOCALITY INDIVIDUAL DAMAGE ASSESSMENT FIELD FORM										
Incident Type		Sector	Place Name	IDA Date						
Geographic Area Description				Page #		Of Total Pages				
IDA Team										
	SINGLE FAMILY	MULTI - FAMILY	MOBILE HOME	Total Surveyed	% Owner	% FL Ins.	% HO Ins.	% Low Income	Number Inaccessible	
AFFECTED	OWNER									
	RENTER									
	Secondary									
MINOR	OWNER									
	RENTER									
	Secondary									
MAJOR	OWNER									
	RENTER									
	Secondary									
DESTROYED	OWNER									
	RENTER									
	Secondary									
TOTAL PRIMARY										
TOTAL SECONDARY										
TOTAL (Incl. Secondary)										
ROADS / BRIDGES	Number of Roads / Bridges Damaged		Number of Households Impacted							
UTILITIES	Number of Households Without Utilities		Estimated Date for Utilities Restoration							
Comments										